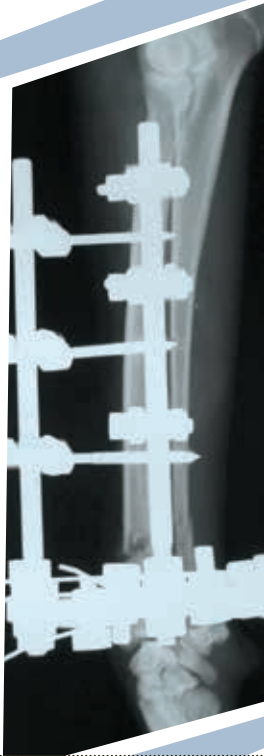
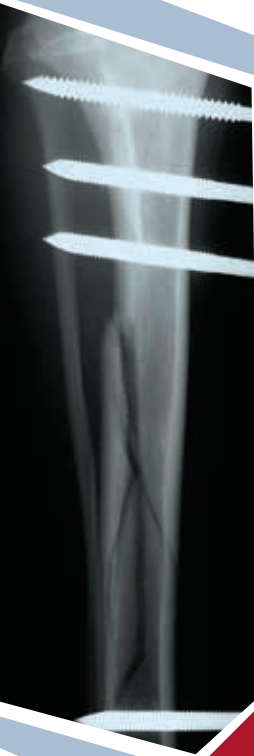




24th Complete Course in External Skeletal Fixation

Linear & Hybrid ESF Sessions

October 27–29 and 29–30, 2017



SAVE
UP TO
\$300

Early Bird Extended to
OCTOBER 5th

IMEX
Veterinary, Inc.

Location - Embassy Suites Hotel
Frisco, Texas (Dallas-Fort Worth)

800-828-4639 | www.imexvet.com

LINEAR ESF SESSION

OCTOBER 27-29, 2017

COURSE OVERVIEW

A unique opportunity to join some of the most experienced surgeons and teachers for an intensive 2.5 day orthopedic surgery course.

This course is a comprehensive forum in which skills in orthopedics and external skeletal fixation can be developed and refined. While centered around external skeletal fixation, key principles relevant to all fracture treatment modalities are covered in depth.

You will leave comfortable using a fracture patient assessment scoring system to drive your preoperative, intraoperative, and postoperative decisions. This integrated approach is beneficial to surgeons of all experience levels.

Everyone is encouraged to learn at their own pace in an informal and interactive atmosphere.



Attendee reviews a Type I-a frame with IM pin tie-in

2015

OBJECTIVES

- Understand key concepts to achieve consistent and predictable success with external fixation
- Learn to apply a systematic process of pre-, intra-, and postoperative fracture treatment planning
- Develop confidence with proper surgical techniques for bone-specific application
- Gain powerful insight to economically expand your fracture treatment capabilities

SUMMARY AT A GLANCE

2.5 Days 22 Lectures
27.5 CE Hours 6 Labs

SAVE UP TO \$300: Early bird prices end October 5, 2017

FACULTY

A team of specialists with years of external skeletal fixation experience in university hospitals and private practices will provide focused instruction and a variety of perspectives on incorporating and applying external skeletal fixation in your hospital.

Don't miss this opportunity to ask questions and interact with the Complete Course in ESF team over two-and-a-half educationally packed days.



Denny Aron, DVM
Diplomate ACVS
Fido's Surgeon



Chris Gauthier, DVM
Diplomate ACVS
VCA Veterinary
Referral Associates



Clara Goh, DVM
Diplomate ACVS
Colorado State
University



Krista Halling, DVM
Diplomate ACVS
Mississauga-Oakville
Veterinary Emergency



Ross Palmer, DVM
Diplomate ACVS
Colorado State
University



Robert Radasch, DVM
Diplomate ACVS
Dallas Veterinary
Surgical Center



Mark Rochat, DVM
Diplomate ACVS
Purdue University



James Toombs, DVM
Diplomate ACVS
Iowa State University

MINUTE-TO-MINUTE
SCHEDULE
LINEAR ESF



FRIDAY, OCT. 27th

7:00 - 7:30 Registration

7:30 - 7:35 Toombs
Introduction of Faculty

7:35 - 7:55 Palmer
Course Overview and
Introduction to the ESF System

7:55 - 8:15 Toombs
ESF Nomenclature

8:15 - 8:25 Palmer
Interactive Exercise #1:
Nomenclature

8:25 - 9:15 Toombs
IMEX® SK Fixator,
Securos Fixator, and Acrylic
Frame Fixators

9:15 - 9:25 Palmer
Interactive Exercise #2:
Proper SK ESF Clamp Assembly

9:25 - 9:45 Palmer
Video: ESF Application Demo

9:45 - 10:00 ▶
Break (refreshments)

10:00 - 10:25 Rochat
General Application Principles:
Linear and Acrylic ESF

10:25 - 11:25 Palmer/Faculty
LAB 1 | ESF Application Principles:
Soft Tissue Modeling

11:25 - 12:00 Gauthier
Biomechanics of ESF

12:00 - 12:10 Faculty
Q & A: Morning Session Wrap-up

12:10 - 1:00 ▶

Lunch (sponsored by IMEX®)

1:00 - 2:30 Gauthier/Faculty
LAB 2 | ESF Biomechanics

2:30 - 3:00 Rochat
Specific Strategies for Applying
ESF to the Tibia

3:00 - 4:00 Rochat/Faculty
LAB 3 | Application of ESF to
the Tibia

4:00 - 4:15 ▶
Break (refreshments)

4:15 - 4:40 Halling
Fracture Alignment/Reduction
Techniques Relevant to ESF

4:40 - 5:05 Goh
Bone Healing with ESF

5:05 - 5:30 Halling
Cancellous Bone Grafts with ESF:
Indications and Techniques

5:30 - 6:10 Palmer
Preop Decision Making:
Fracture Assessment Score

6:10 - 6:20 Faculty
Q & A: Daily Wrap-up,
Homework Assignment #1

SATURDAY, OCT. 28th

7:30 - 8:15 Palmer
Preop Decision Making:
Radius/Ulna (Homework #1
Grading)

8:15 - 8:45 Radasch
Specific Strategies for Applying
ESF to the Radius/Ulna

8:45 - 9:45 Radasch/Faculty
LAB 4 | Application of ESF to
the Radius

9:45 - 10:00 
Break (refreshments)

10:00 - 10:25 Toombs
Staged Disassembly:
Why, When and How

10:25 - 11:00 Palmer
Video: IM Pin and ESF
Application to the Humerus
and Femur Demo

11:00 - 11:50 Aron
Specific Strategies for Applying
ESF to the Humerus and Femur

11:50 - 12:00 Faculty
Q & A: Morning Session Wrap-up

12:00 - 1:00 
Lunch (sponsored by IMEX®)

1:00 - 2:15 Aron
Preop Decision Making:
Humerus and Femur Fractures

2:15 - 4:15 Aron/Faculty
LAB 5 | Application of ESF to
the Humerus and Femur

4:15 - 4:30 
Break (refreshments)

4:30 - 5:45 Aron
Postop Care of ESF Patients

5:45 - 6:15 Goh
Application of ESF to
the Mandible

6:15 - 6:25 Palmer/Faculty
Q & A: Daily Wrap-up,
Homework Assignment #2

SUNDAY, OCT. 29th

7:30 - 8:00 Radasch
Economics of ESF and
Creating an ESF Pack

8:00 - 8:30 Gauthier
Techniques and Indications
for Transarticular ESF

8:30 - 9:00 Rochat
Summary of Key Concepts for
Reducing Patient Morbidity

9:00 - 10:00 Faculty
LAB 6 | Your Clinical
Case Simulation

10:00 - 12:40 Faculty
The Big Bang! - Interactive
Discussion of Your Cases

Equipment
Sponsored by



HYBRID ESF SESSION

OCTOBER 29-30, 2017

COURSE OVERVIEW

This is an advanced course that integrates selected circular and linear ESF components to construct hybrid frames for treatment of difficult to manage juxta-articular fractures.

Attendance is limited to 26 participants to ensure a quality experience for everyone enrolled.

Everyone is encouraged to learn at their own pace in a challenging and interactive atmosphere.

◆ Prior or concurrent enrollment in the linear ESF session of the Complete Course in ESF is required to enroll in the hybrid ESF session.



Dr. Erick Egger instructs attendees during a hands-on lab

2015

OBJECTIVES

- Develop the skill and experience required to treat problematic juxta-articular fractures using hybrid ESF
- Learn to utilize basic and advanced hybrid ESF frames to manage fractures and joint injuries

SUMMARY AT A GLANCE

1 Day	6 Lectures
12 CE Hours	4 Labs

FACULTY



Ross Palmer, DVM
Diplomate ACVS



Robert Radasch, DVM
Diplomate ACVS



Mark Rochat, DVM
Diplomate ACVS

MINUTE-TO-MINUTE SCHEDULE HYBRID ESF



SUNDAY, OCT. 29th

- 1:00 - 1:40** Registration
- 1:40 - 2:05** Radasch
Introduction and History
- 2:05 - 3:10** Palmer
Hybrid ESF Components
and Instrumentation
- 3:10 - 4:10** Palmer/Faculty
LAB 1 | Circular ESF Components,
Hybrid Rods, and Use of
Tensioned Fixation Wires
- 4:10 - 4:20** ▶
Break (refreshments)
- 4:20 - 4:50** Radasch
Frame Design of Hybrid Fixators
- 4:50 - 5:30** Rochat
Biomechanics of Hybrid Fixators
- 5:30 - 7:00** Radasch
Fracture Management
with Hybrid ESF
- 7:00 - 7:30** Rochat
Transarticular Application
of Hybrid ESF
- 7:30 - 8:30** ▶
Dinner (sponsored by IMEX®)

MONDAY, OCT. 30th

- 7:45 - 9:25** Radasch/Faculty
LAB 2 | Application of Hybrid ESF
to a Distal Tibial Fracture
- 9:25 - 10:30** Radasch/Faculty
LAB 3 | Application of Hybrid ESF
to a Distal Humeral Fracture
- 10:30 - 10:45** ▶
Break (refreshments)
- 10:45 - 11:45** Radasch/Faculty
LAB 4 | Application of Hybrid ESF
to a Distal Radial Fracture
- 11:45 - 12:30** Palmer
Final Comments, Questions
and Discussion

Equipment
Sponsored by



HOTEL & EVENT LOCATION

◆ When booking your reservation, please ask for the discounted room rate of \$139.
Group discount code: **ESF**

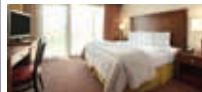
HOTEL RESERVATIONS

IMEX® Veterinary has negotiated discounted rates for the 24th Complete Course in External Skeletal Fixation attendees.

Reservations must be received by **October 5, 2017** to guarantee availability and rates.

EVENT LOCATION

Embassy Suites Hotel
7600 John Q. Hammons Drive
Frisco, Texas, 75034, USA
Phone: 1-972-712-7200
Fax: 1-972-712-7221
www.embassysuitesfrisco.com



Only 25 minutes from Dallas-Fort Worth International Airport (DFW) and 20 miles from Dallas Love Field (DAL).

Save up to **\$65 per night** off the listed room rates when booking your room with the Embassy Suites Hotel.

RESERVE A ROOM

Group discount code: **ESF**
Phone: 972-712-7200
Online: <http://bit.ly/24CourseHotel>

SAVE UP TO **\$300** with early bird registration

REGISTRATION RATES & INFO

Both course sessions are designed as an all-encompassing event. Included with registration, you receive:

- **Daily cooked-to-order breakfast** (with Embassy Suites Hotel reservation)
- Morning and evening snacks
- All day beverages
- Lunch (Friday and Saturday - linear ESF session)
- Dinner (Sunday - hybrid ESF session)
- **Cocktail happy hour** (with Embassy Suites Hotel reservation)
- 161 page course proceedings (linear ESF session)
- 59 page course proceedings (hybrid ESF session)

COURSE RATES

	LINEAR ESF SESSION		HYBRID ESF SESSION*	
	Early Bird Rate	Regular Rate	Early Bird Rate	Regular Rate
	\$1150	\$1350	\$575	\$675

◆ Early bird registration **deadline is October 5, 2017** for linear and hybrid ESF sessions

Residents, interns, and students receive 15% off course registration.

QUESTIONS

US and Canada 800-828-4639
International 903-295-2196
imexdesk@imexvet.com

CANCELLATIONS/REFUNDS

Cancellations after September 27, 2017 will incur a \$250 administrative fee.

*Prior or concurrent enrollment in the linear ESF session of the Complete Course in ESF is required.

IMEX® Veterinary, Inc. does not discriminate on the basis of race, color, age, religion, national origin, sexual orientation, gender identity, sex, marital status, disability, or status as a U.S. veteran.

COURSE REGISTRATION

Registration requires all valid fields to be fully completed and accompanied by full payment. Registrations are accepted on a first-come, first-served basis until the maximum number of attendees has been reached.

ATTENDEE INFORMATION

First Name
Last Name
Clinic Name
Address 1
Address 2
City and State/Province
Postal Code
Country
E-mail
Phone Number
Fax Number

WAYS TO REGISTER

Phone: 903-295-2196
Toll Free: 800-828-4639
E-mail: imexdesk@imexvet.com
Fax: 903-295-0730

LINEAR

Early Bird Regular
 \$1150 \$1350

HYBRID

Early Bird Regular
 \$575 \$675

PAYMENT

MasterCard Visa

Expiration Date

Security Code

Account Number

Cardholder's Name

Signature

Registration must be received by **October 5, 2017** to receive early bird rates for both the linear and hybrid ESF sessions. After this date, registration rates increase by \$200 for the linear ESF session and \$100 for the hybrid ESF session.

IMEX® Veterinary, Inc. is a Registry of Approved Continuing Education (RACE) Provider (Number 923).

The Linear ESF Session (program 923-29076) is approved by the AAVSB RACE to offer a total of 27.50 CE Credits (27.50 max) being available to any one veterinarian; and/or 0.00 Veterinary Technician CE Credits (0.00 max). The Hybrid ESF Session (program 923-29077) is approved by the AAVSB RACE to offer a total of 12.00 CE Credits (12.00 max) being available to any one veterinarian; and/or 0.00 Veterinary Technician CE Credits (0.00 max). This RACE approval is for the subject matter categories of: Category One: Scientific using the delivery method of Seminar/Lecture Lab/Wet Lab. This approval is valid in jurisdictions which recognize AAVSB RACE; however, participants are responsible for ascertaining each board's CE requirements. RACE does not "accredit" or "endorse" or "certify" any program or person, nor does RACE approval validate the content of the program.

